

Aboyne Drive Raynes Park, SW20 0AL

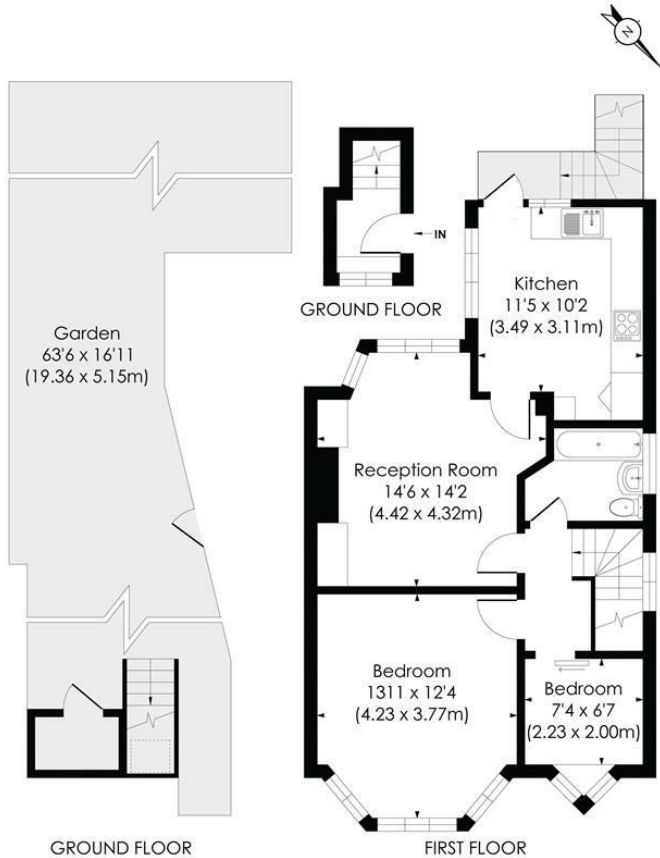
£425,000 Leasehold



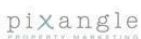
This beautifully presented TWO BEDROOM, first floor "Mock Tudor" maisonette has a superb West facing garden and lovely views over Malden Golf Club. Conveniently located for access to Raynes Park, New Malden and the A3 for routes in and out of London. An ideal first/second time purchase with a 117 year lease, low maintenance charges, spacious kitchen, large double bedroom with storage, modern bathroom and a spacious reception room. Offered to the market with no onward chain.

ABOYNE DRIVE, SW20

Approx. Gross Internal Floor Area
610 Sq. ft/56.71 Sq. m



© Pixangle Property Marketing Ltd. info@pixangle.com Tel: 0208 870 2118



This floor plan has been prepared for the purpose of illustration only in accordance with the latest RICS code of measuring practice and is not to scale. All measurements and areas are approximate and whilst every effort has been made to ensure the accuracy of the plan contained here, no responsibility is taken for any error, omission or misstatement.

- Two Bedroom - 1st Floor Maisonette
- Private West Facing Garden - Loft Storage
- Attractive Views Over Malden Golf Course
- Beautifully Presented Throughout
- Spacious Kitchen/Dining Room
- Easy Access To Raynes Park And New Malden
- 117-Year Lease Remaining
- No Onward Chain
- EPC - C
- Council Tax Band - C

Energy Efficiency Rating		Current	Potential
Very energy efficient - lower running costs	A		
(81-91)	B		
(69-80)	C	72	77
(55-68)	D		
(39-54)	E		
(21-38)	F		
(1-20)	G		
Not energy efficient - higher running costs			
England & Wales		EU Directive 2002/91/EC	

For Free Mortgage Quote and Best Mortgage Rates, call Ellisons Mortgage Advisor on 0208 944 9595



Although these particulars are believed to be correct, their accuracy is not guaranteed and they do not form part of any contract.

Celebrating 30 years of successful Sales and Lettings in Merton

